

MONTHLY MEMBERSHIP PROGRESS REPORT

LOCATION INDIA

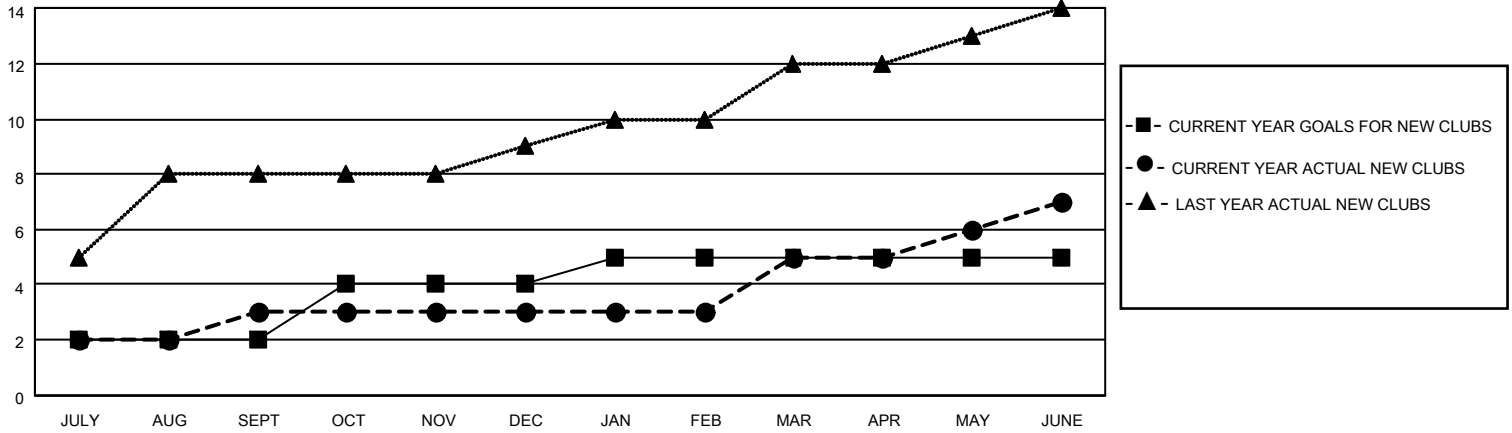
District 322 A

Results as of: 6/30/2023

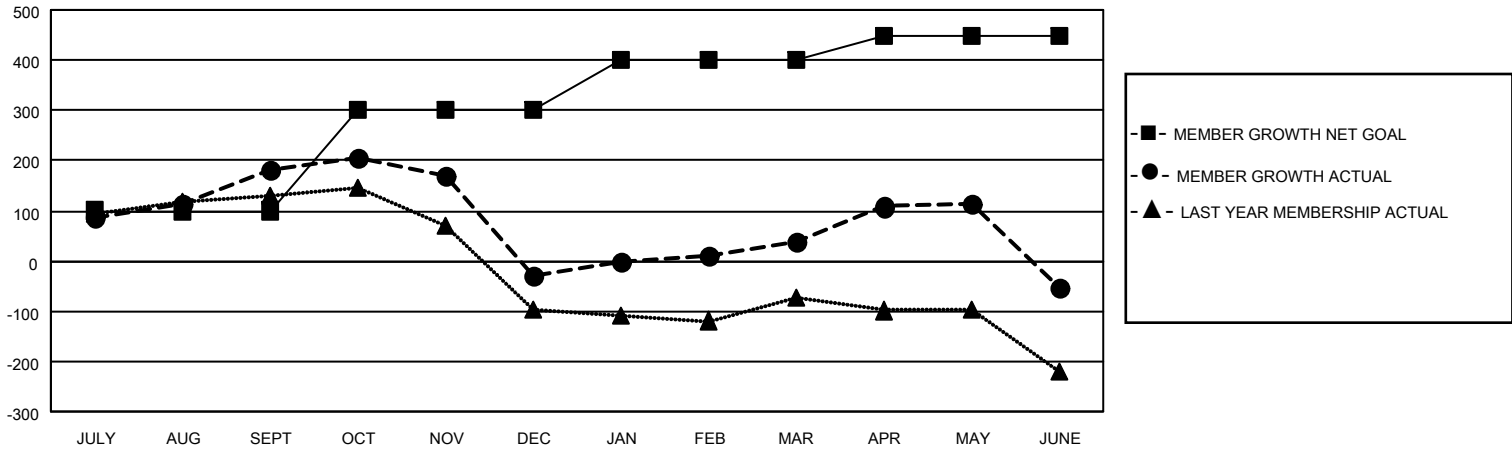
Clubs			
RESULTS FOR 2022-2023			
QUARTER	NEW CLUB GOAL	NEW CLUBS	DROPPED CLUBS
JULY/AUG/SEPT	2	3	1
OCT/NOV/DEC	2	0	6
JAN/FEB/MAR	1	2	2
APR/MAY/JUNE	0	2	1

Members			
RESULTS FOR 2022-2023			
QUARTER	MEMBER GROWTH NET GOAL	MEMBER GROWTH ACTUAL	DROPPED MEMBERS ACTUAL (including transfers)
JULY/AUG/SEPT	100	297	93
OCT/NOV/DEC	200	84	287
JAN/FEB/MAR	100	158	60
APR/MAY/JUNE	50	228	301

GOALS AND ACTUAL NEW CLUBS CUMULATIVE



GOALS AND ACTUAL MEMBERS CUMULATIVE



DROPPED CLUBS: 10	
DROPPED MEMBERS	
DECEASED	9
CLUB CANCELLED	147
OTHER	585
TOTAL	741

63 CLUBS OF 95 ADDED 1 OR MORE NEW MEMBERS

[CLICK HERE FOR CUMULATIVE MEMBERSHIP DATA](#)

<u>GENDER DISTRIBUTION</u>	
MALE	2,295 (68.59%)
FEMALE	1,050 (31.38%)
NON BINARY	1 (0.03%)
PREFER NOT TO ANSWER	0 (0.00%)
TOTAL FAMILY UNIT MEMBERS	1,472
FAMILY MEMBERS PAYING HALF DUES	806